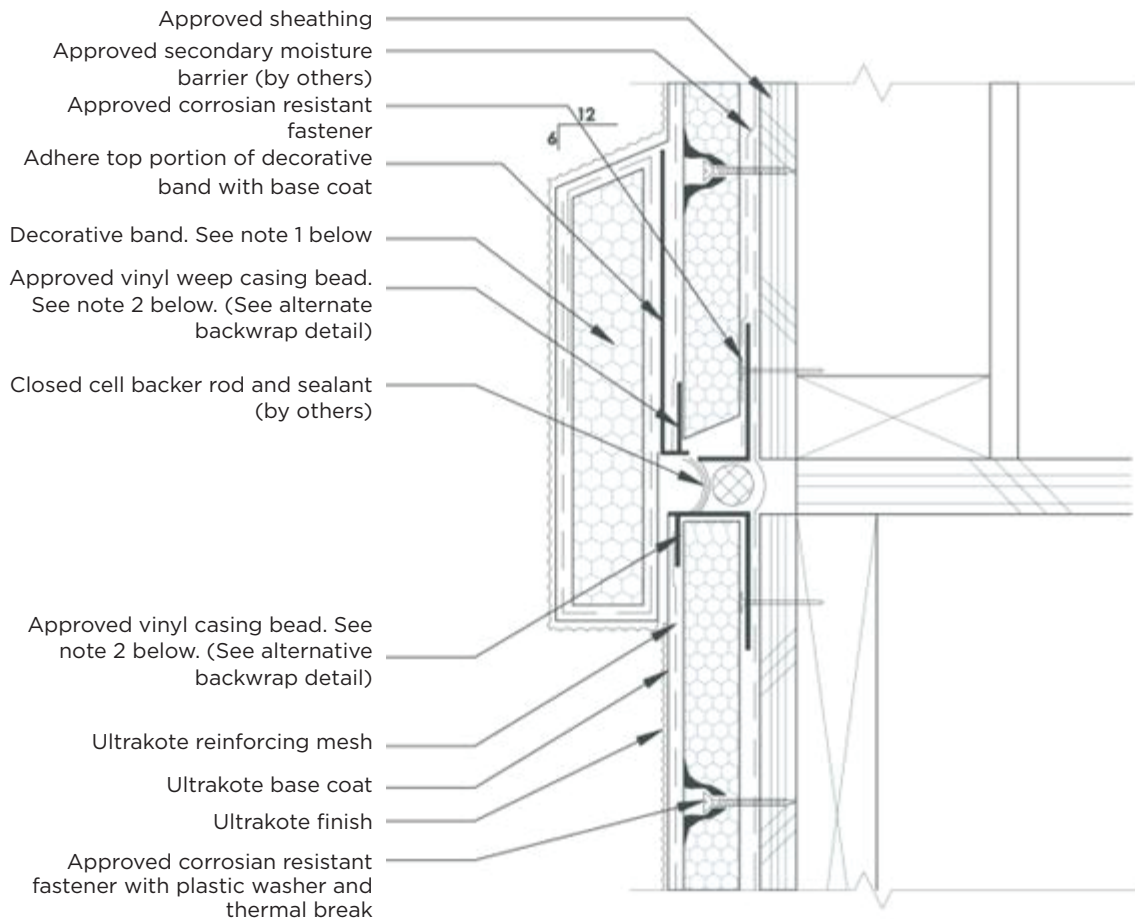


Control Joint at Floor Line in Wood Frame Const. with Band

WM 3.2



NOTE 1: Deocrative band shall be pre-wrapped with base coat and reinforcing mesh prior to installation.

NOTE 2: Maintain 1/8" space between beveled insulation and weep casing bead.

NOTE 3: At horizontal wall surfaces, including ledges, caps, sills, etc. a minimum slope of 6:12 is requires.